

Detour Challenge

Read between the lines or Read the signs

Goal:

This is a detour challenge, where the team must decide whether they will choose a road markings challenge or a signs challenge to complete. As a team they must correctly match the sign or image of road markings with the rule that applies and come up with a reason as to why that particular marking or sign was used for that road.

Alternatively if in a classroom setting or using as a teaching aid you can use both of these activities separately.

What they learn:

The importance of road laws and why we have them

Materials:

- 1x Challenge Card per team
- 1x Set of three Read between the Lines image cards per team
- 1x Set of three Read between the Lines rule cards per team
- 1x Set of three Read the Signs image cards per team
- 1x Set of three Read the Signs rule cards per team

Print Instructions:

- Print this document to fit on A4 paper
 - Cut along the dotted line.
 - Print single-sided only

Answers:



Read the Signs

You must not turn left

Examples of why: This can be because there are double lanes or it is more dangerous to turn left at that particular point on the road. It may be that the street on the left is a one way street and therefore you can't drive down it.



You cannot make a U-turn

Example of why: This may be a busy street with multiple lanes, which is why it is too risky for the driver to make a U-turn and could put yourself and others in danger.



Take care - slippery surface

Examples of why: There may be roads where you need to slow down and take extra care to make sure your car doesn't skid on the surface and cause an accident. When it is wet, certain areas of roads can become even more hazardous.

Read between the lines

You must not park or stop your vehicle on 'no stopping lines' (broken yellow lines).

Examples of why: There can be a number of reasons for the lines, including, a narrow street, driveways, bike lanes, busy main streets or highways. The main thing is it's about ensuring that particular street has space where needed for the traffic to move safely and pull over when needed.



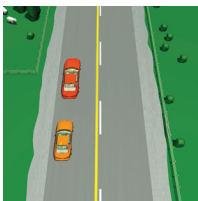
You may come back over the dashed yellow line to finish passing, you must not cross it to start passing.

Examples of why: The road or highway may be particularly busy, with cars driving at high speed and areas with blind corners and hills. These lines forewarn that a no passing area is coming up and that you must not begin to pass another vehicle as it is dangerous to do so.



You must not pass another vehicle if it means you have to cross over a no-passing line on your side of the centre line.

Examples of why: The road or highway is a dangerous area for passing other vehicles. It could be that it's really busy or cars are driving at a high speed. It might also be a narrow lane or have many blind corners, or limited visibility or hills.



Introduction:

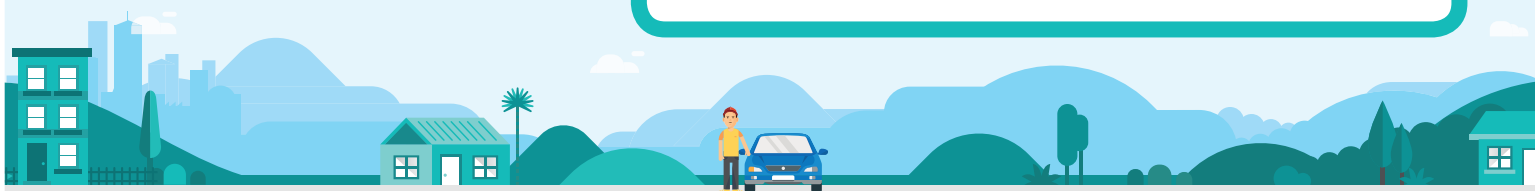
It's important to drive to the conditions and know what the rules are for each road based on the signs and markings around us. These are there to ensure that we know the safest way to drive in that particular area.

This is a detour challenge - so you must decide as a team, do you want to read between the lines or read the signs?

The Challenge!

To complete this challenge you must:

- 1 As a team you must work together to match up the image cards of either the road signs or road markings with the correct rule card.
- 2 Then, discuss why a road or area might have this particular road rule applied - for example ask yourselves as a team, what kind of road would have this rule? Why would it have this rule?
- 3 Once you think you've got all 3 correct and have come up with a potential reason for each road rule, show and tell the facilitator.



Introduction:

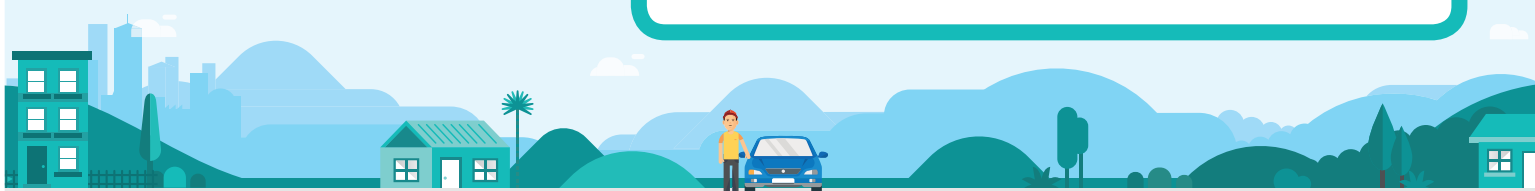
It's important to drive to the conditions and know what the rules are for each road based on the signs and markings around us. These are there to ensure that we know the safest way to drive in that particular area.

This is a detour challenge - so you must decide as a team, do you want to read between the lines or read the signs?

The Challenge!

To complete this challenge you must:

- 1 As a team you must work together to match up the image cards of either the road signs or road markings with the correct rule card.
- 2 Then, discuss why a road or area might have this particular road rule applied - for example ask yourselves as a team, what kind of road would have this rule? Why would it have this rule?
- 3 Once you think you've got all 3 correct and have come up with a potential reason for each road rule, show and tell the facilitator.



DRIVE

Read between the lines

You must not pass another vehicle if it means you have to cross over a no-passing line on your side of the centre line.

DRIVE

Read between the lines

You may come back over the dashed yellow line to finish passing, you must not cross it to start passing.

DRIVE

Read between the lines

You must not park or stop your vehicle on 'no stopping lines' (broken yellow lines).

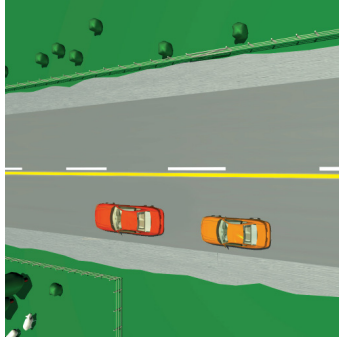
DRIVE

Read between the lines

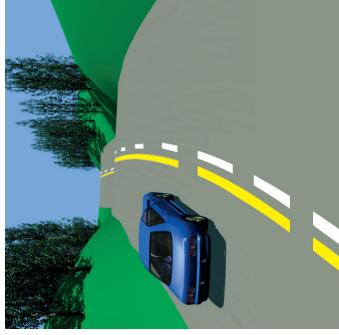


DRIVE

Read between the lines



Read between the lines



DRIVE

DRIVE

Read the signs



DRIVE

Read the signs



DRIVE

Read the signs

Take care - slippery surface.

DRIVE

Read the signs

You must not take a U-turn.

DRIVE

Read the signs

You must not turn left.

Read the signs

