

# Truth or Myth Challenge

## Goal:

We know that there are many myths about learning to drive and road rules, this exercise tries to bust some of these to reveal the true road rules and ensure people are aware of them.

## What they learn:

The correct licensing conditions and those that are actually common myths within the community.

## Materials:

- 1x Challenge card per team
- 1x of each Truth and Myth heading cards per team
- 1x Set of fourteen Truth or Myth cards per team

## Print Instructions:

- Print this document to fit on A4 paper
  - Cut along the dotted line.
  - Print single-sided only

## Answers:

Each team must continue to group the cards until they have all of them in the correct groups

## Truths:

- You can fail your Restricted or Full test before even getting into your car if it doesn't have a current warrant of fitness or registration at the test
- You can carry passengers on your Learners licence, as long as your supervisor is in the front passenger seat and agrees to the passengers
- You can get extra time for sitting your Learners theory test if you have reading difficulties
- You can sit your Learners in 9 different languages
- You can take an interpreter to your Restricted and Full licence test, if English is your second language or understanding English is hard for you
- You can drive with passengers on your Restricted if they are your spouse or children
- You can apply for exemptions to some of the Restricted conditions. Like the hours you are allowed to drive in or taking passengers. But this requires exceptional circumstances
- You can drive at any time of day (and with passengers) on your Learners, if your supervisor is with you and says it's ok

## Myths

- If you have younger siblings or family that you are looking after you can drive them around on your Restricted licence
- It's ok to have one alcoholic drink when driving on your Restricted licence when you're under 20
- You can drive with just an L Plate on the back windscreen
- You can drive on your own once you have your Learner's licence
- You can drive with mates on your Restricted if you're being the sober driver
- You can practice driving before you get your Learners

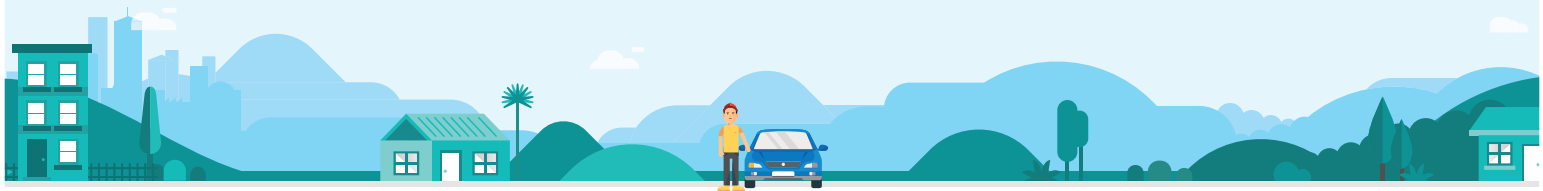
## Introduction:

Knowing the real road rules and your licensing conditions means you won't get caught out while driving around and means we can all be safer drivers.

Often there are rules that we think are true but actually aren't the real rules of the road!

## The Challenge!

- 1 There are a stack of cards with different rules and conditions, you must decide whether these rules are the "Truth" or whether they are a "Myth".
- 2 Place your cards under each group and let your facilitator know when you are finished!



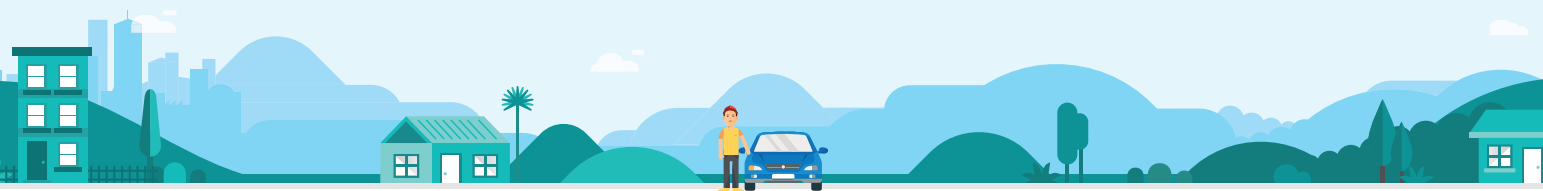
## Introduction:

Knowing the real road rules and your licensing conditions means you won't get caught out while driving around and means we can all be safer drivers.

Often there are rules that we think are true but actually aren't the real rules of the road!

## The Challenge!

- 1 There are a stack of cards with different rules and conditions, you must decide whether these rules are the "Truth" or whether they are a "Myth".
- 2 Place your cards under each group and let your facilitator know when you are finished!



## DRIVE

Truth or Myth

**You can fail your Restricted or Full test before even getting into your car if it doesn't have a current warrant of fitness or registration at the test.**

## DRIVE

Truth or Myth

**You can carry passengers on your Learners licences, as long as your supervisor is in the front passenger seat and agrees to the passengers.**

## DRIVE

Truth or Myth

**You can get extra time for sitting your Learners theory test if you have reading difficulties.**

## DRIVE

Truth or Myth

**You can sit your Learners in 9 different languages.**

## DRIVE

Truth or Myth

**You can take an interpreter to your Restricted and Full licence test, if English is your second language or understanding English is hard for you.**

## DRIVE

Truth or Myth

**You can drive with passengers on your Restricted if they are your spouse or children.**

## DRIVE

Truth or Myth

**You can apply for exemptions to some of the Restricted conditions. Like the hours you are allowed to drive in or taking passengers. But this requires exceptional circumstances.**

## DRIVE

Truth or Myth

**You can drive at any time of day (and with passengers) on your Learners, if your supervisor is with you and says it's ok.**

## DRIVE

Truth or Myth

**If you have younger siblings or cousins you can drive them around on your Restricted licence.**

## DRIVE

Truth or Myth

**It's ok to have one alcoholic drink when driving on your Restricted licence when you're under 20.**

## DRIVE

Truth or Myth

**You can drive with just an L Plate on the back windscreen.**

## DRIVE

Truth or Myth

**You can drive on your own once you have your Learner's licence.**

## DRIVE

Truth or Myth

**You can drive with mates on your Restricted if you're being the sober driver.**

## DRIVE

Truth or Myth

**You can practice driving before you get your Learners.**



DRIVE

Truth



DRIVE

Myth